



New 2023 Isuzu

F Series

\$132,999 AUD*

Product Details

Describe the item	8 Pallet Premium Pantech	GCM	16000
Badge	FRR110-240	GVM	11000
Item Condition	Excellent	Registration	No
Colour	White	Suspension	LEAF SPRING
Stock Number	#212041	Warranty	6 years 300000 km
Drive	4x2	Wheel Base	4990

Description

8 Pallet Premium Pantech

- * 5500 (L) mm x 2500 (W) mm x 2500 (H) mm
- * Heavy Duty Steel Chassis-includes cross supports & plates - 300mm
- * Stainless Steel Rear Door Frame - 8 Stainless Steel Hinges and 2 Grab Handles
- * Steel checker-plate floor - 5mm painted 210 Lacnam Silver Primer
- * Chequer-plate up-stands/ Kick plate - 300mm
- * 3 x Internal Tie Rails (F TRACK OPTIONAL EXTRA)
- * 3 x Interior LED light mounted to tail lights
- * 4 x LED Multi Voltage Recessed Clearance & Side lights
- * Rear Barn Doors -FRP Reinforced Fibreglass Honeycomb Panel -30mm
- * Front and Side Walls -FRP Reinforced Fibreglass Honeycomb - 30mm
- * 2 x Fully Moulded Black Docking Rubbers-Harder wearing
- * Stainless Steel Rear Loop Step - Tail light Protector
- * 2 x Mudguards & Mounting Brackets – Moulded Plastic
- * Internal Tailgate Drop in Plate - Suitable for all Major Brands
- * QLD Modification Plate fitted and Certified body mounting for all vehicles over 4495kg GVM

**** PRICING DOES NOT INCLUDE TAILGATE/ NOSE CONE/ ON ROADS****

Note: Photos of FRR110-260 not FRR11-240

Offering a comprehensive warranty, we are a full service provider of a large range of truck bodies. We offer sales, service, parts and regular maintenance to our clients. We are able to offer you the ability to free up your capital and grow your business with our LONG TERM HIRE option and Premium Fleet Management options.

With flexible short and Long-Term Hire options, our Hire service is perfect for businesses with fluctuating needs for projects, or for those who are looking to quickly grow and expand their services.

Part of our engagement is to listen to you the customer describe the project and intended use to customise if necessary parts of the build that would be more suitable to your application. That said we always have trucks available for sale from our ready to go stockholding. Available on all truck bodies Hino, ISUZU, Volvo, MAN, Scania, and Mercedes. QLD/NSW/VIC/SA/TAS/WA/NT.

Body

Body Make	8 Pallet Premium Pantech
Body Capacity	5
Body Dimensions	* 5500 (L) mm x 2500 (W) mm x 2500 (H) mm

Engine

Engine Make	Isuzu
Engine Number	4HK1-TCH
Fuel Capacity	200
Engine Power	260
Fuel Type	Diesel

Cabin Features

Air Conditioning	Factory A/C
Fridge	No
GPS	Factory Integrated
UHF/CB	No
Sleeper	No
Speed Limiter	No
Stereo	Factory

Accessories

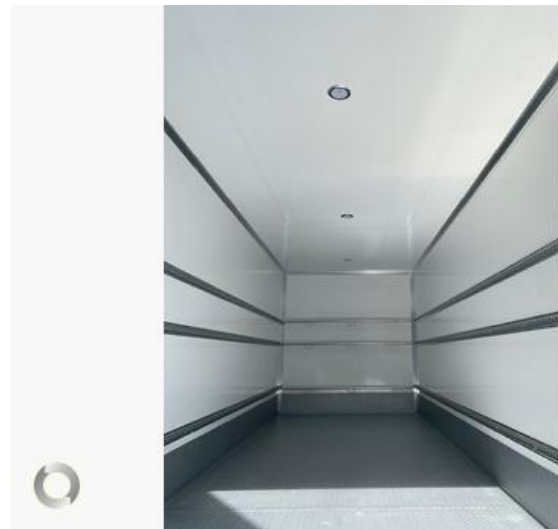
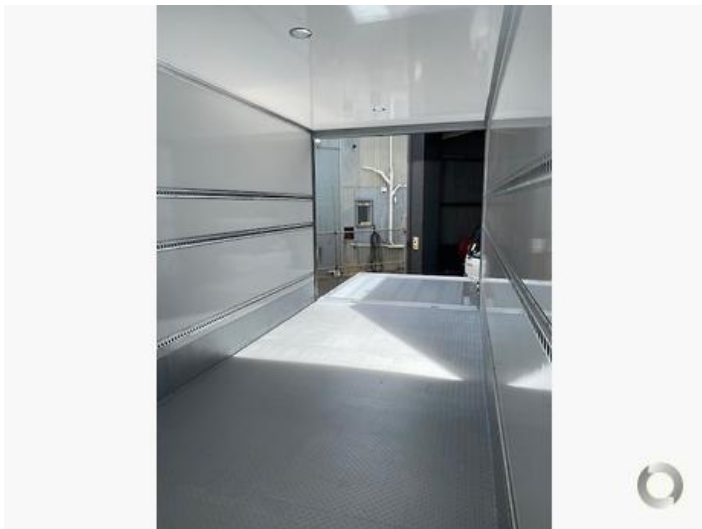
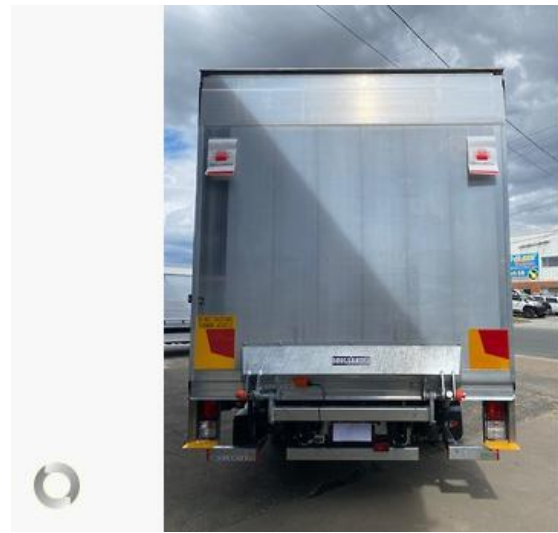
Bull bar	Optional Extra
Wind Deflector	Optional Extra

Transmission

Transmission Type	Automated Manual Transmission
Transmission Manufacturer	Automated Manual Transmission
Gears Forward	6

Photos







Created on 05/07/2023

*If the price does not contain the notation that it is "Drive Away No More To Pay", the price may not include additional costs, such as stamp duty and other government charges. Please confirm price and features with the seller.